

# Design & Implementation of Secured Authentication Scheme for Wireless Sensor Networks

Mr. Anand D. Dhawale  
M.Tech Research Scholar  
Shri Ramdeobaba College of Engg. & Mgm  
Nagpur-INDIA  
dhawaleanand@yahoo.com

Prof. M. B. Chandak  
Associate Professor & Head, Deptt. of CSE  
Shri Ramdeobaba College of Engg & Mgm  
Nagpur-INDIA  
chandakmb@gmail.com

**Abstract** —Wireless sensor networks (WSNs) are composed of sensor nodes usually called as motes organized in a cooperative network. These networks are especially cooperative because motes collect data from environment and the data is passed through network. Further data is collected at base station for processing. The networks are installed in rough environments and where traditional networks are not possible to function well. Such installment is called as deployment. Generally there are three issues of research in wireless sensor networks like deployment, operation and security. WSNs got high popularity due to broad range of applications. These networks have attracted tremendous researchers due to their unique characteristics that differ them from traditional wired networks. WSNs are special networks having great future ahead but at the same time suffer from many hazards due to their unique characteristics. They are having large number of low cost sensor nodes with constraints like low power (usually operated by battery), low processing ability, and communication and storage limitations. Due to deployment nature and radio links the nodes are easily targeted by attacker like physical attack of node capture. If we think of applying security to WSNs we have to face the resource limitations constraints. The resource limitations don't allow for applying traditional mechanisms having large overhead and computational powers. Out of many security solutions authentication seems to be one of the best solutions to secure the whole network. The network can be made secure if we allow only true information to be inserted from true node. Authentication can be efficiently used to check valid, fake and modified communication. Such authentication techniques in wireless sensor networks are analyzed in this paper. Further this paper describes the implementation of a secured node verification scheme that authenticates the true nodes to access network and detects attacker nodes. The scheme never opens the secret keys during this process. The rekeying mechanism used also adds much security. The mitigation of some attacks is also explained with desired results.

**Keywords-** *Wireless Sensor network, attacks, fingerprint, authentication, security.*

## I. INTRODUCTION

Wireless Sensor Networks are generally deployed in a spatially distributed environment. The environment is targeted area which creates some events. The sensors catch the events. The events include sensory information like physical or geological changes. The collected data and information is transmitted from one node to other node through wireless medium. The applications include monitoring, controlling and tracking areas like object or human tracking, battlefield monitoring, habitat monitoring. Many of the applications collect and maintain the secured data. The large numbers of sensor nodes are mounted and once deployed there is no manual maintenance and monitoring till long time. Due to this scenario it creates a security problem. Nodes are more likely to be affected by various physical attacks which further cause node compromise, node cloning, man-in-middle attack and replay attack. Lot of researchers are attracted towards the security of wireless sensor network because until no concrete mechanism is established in this case. The reason to this is resource constraint and distributed unattended environment of sensor networks. The resource constraints include limited battery, limited memory and limited processing power. The research shows that lot of work has been done on the development of wireless sensor networks for application purpose but very little attention is paid for the great security mechanism. The different schemes are applied for data transfer. In some cases all nodes transfer data to base station where nodes collect data on their own responsibility. In certain cases some nodes are requested data from other nodes. Some applications require data to be confidential and visible to only certain authenticated nodes. In such cases an unauthenticated outsider attacker node may feel the data interesting collected by other nodes. Such outsider attacker may access data and get some knowledge or alter the data and violates the data integrity. So, to stop such unauthenticated nodes from accessing data is much required. Thus, a secured node authentication protocol is required to ensure the data confidentiality, integrity and access control.

As the application domain of wireless sensor networks is increasing and with the emergence of high data rate sensor network applications there is a need for high security and high performance networks. [1] The access to the network might be on some security criteria or on the basis of some subscription amount. The user authentication in wireless sensor networks is critical task. The resource constraints don't allow traditional security solutions to work on WSNs. There are certain user authentication schemes for other applications but we can't directly use them for sensor networks. Some shortcomings are there in applying security schemes.[2] The node capture gets full control over the network through physical attacks. The attacker can read all secrets and copy the node to make the similar node of same identity and behavior like true node.

#### A. Background

Generally the authentication of WSNs is divided into two levels, base station authentication and sensor node authentication. The base station authentication includes the authentication of base station. The authentication can be done by other base station or member nodes. The sensor node authentication includes authentication of sensor nodes by other nodes or base station. Also there are two schemes like centralized authentication and distributed authentication. In centralized authentication a node is authenticated by central entity (base station) of network. The base station has more capacity and power so it is easy for base station to have this responsibility. But the shortcomings of this scheme are more. First, single point of failure of base station causes damage to complete network. Second, the base station may suffer from DoS (Denial of service attack). Third, more requests come to base station for authentication so nodes surrounding base station always remain busy in serving the authentication requests. In distributed authentication scheme, a node will be authenticated by surrounding nodes. The communication overhead of the network is reduced. Though there have been some developments in the field of sensor network security, the solutions presented thus far address only some of security problems faced. All the security schemes developed are targeted to particular network and also network requirements are different based upon the properties of the different networks.

#### B. Motivation

Physical tampering causes major damage to sensors and further to complete network.. If sensors are distributed in an unprotected area, an attacker may collect the sensor nodes, analyze the electronics, may study the node to find identity and steal cryptographic keys. To protect the sensor nodes from such attacks, sensors must be tamper-proof or they must erase all permanent and temporary storage when compromised. Secure key rotation mechanisms can also mitigate the threat of stolen cryptographic keys. Also due to the strong constraints that the sensor nodes have (memory storage, computing capacity, limited battery), the existing security protocols are too heavy to be used this. Some of the protocols that address security on the node to node communication use several keys

for every sensor node, which introduces more storage and computation capacity needs.

## II. SECURITY IN WIRELESS SENSOR NETWORKS

In this section general security scenario of wireless sensor network is explained.

Wireless sensor networks provide great range of application. Any system which provides applications needs to be secured [3]. During the study of any domain more concentration is given to the security rather than applicability. If we study signal systems, more you need to concentrate on noise factor which affects the signals. Many of the WSNs are used for confidential data processing. So, they need to be secured.

#### A. Attacks

The various attacks that are interested in literature are listed here.

##### 1) Privacy attack

Privacy attack is mainly to get secret information. Attacker monitors the network traffic, listen and study data. The attacker may get the content of communication and may guess the role of nodes. Attacker then may insert a node or compromise a node.

##### 2) Clone Attack

Attacker may insert with the keys and identity of compromised node and make clone of true node. The attacker node attempts to behave like true node and try to access network.[3]

##### 3) Traffic analysis attack

The attacker gets the knowledge of traffic in the network. It guesses that more traffic is towards base station. This makes the network completely useless.

##### 4) Sybil attack

A single node is copied and attacker presents several identities to the network. This affects the routing protocol of network. Using Sybil attack one node may be present in multiple locations. This attack is somewhat less efficient and easy to guess.[4]

### 5) *Replay Attack*

The attacker node transmits previous messages and tries to have access to the network. It is difficult for the receiver to distinguish between a normal message and replayed message.

### 6) *Selective forwarding attack*

The attacker node forwards some packets and selectively drops others. It passes some packets to aware neighbors that this node is not dead. By doing this it is hard to detect such attacker node.

## B. *Limitations to security in wireless sensor networks*

Certain obstacles are present to apply security mechanisms in wireless sensor networks. They make it difficult to apply traditional security mechanisms directly.

### 1) *Limited resources*

The memory size of sensor node is very limited. Thus, complex security mechanisms requiring much memory do not allow applications to run well. The key size and number of keys needs to be considered. The energy is also a constraint. Extra energy is needed for the security scheme implementation. Obviously security adds extra processing power and communication overhead.

### 2) *Unreliable communication*

Any type of security system mainly depends upon the communication strategy of the network. The wireless network makes it easier to attacker to have easy access to data from the wireless links. This also causes damage to network security.

### 3) *Unattended operation*

Once the sensor network is deployed there is no manual supervision and is left unattended for long time. This makes network exposed to physical attacks. Also the networks are managed remotely so, it is very difficult to guess if a node has been physically attacked.

## C. *Security requirement scenario*

Here the requirements of the security for wireless sensor networks id explained briefly.

### 1) *Authentication*

When data comes to base station it is important to know that which sensor node has sent data. Thus data origin authentication is needed. Base station can guess which of the nodes is behaving abnormally and not following the rules of

the protocol. Base station can alert other nodes about an unauthorized node.

### 2) *Freshness of data*

The data needs to be fresh. This is because the attacker node with replay attack may send previous messages. So, network needs to distinguish between fresh and previous messages.

### 3) *Integrity*

If message has been altered somewhere it must be detected by network protocol. If authentication is provided then automatically integrity comes with authenticated communication because there are no chances to alter data.

### 4) *Availability*

This issue deals with the scalability of network. Availability of all the nodes of network is essential. If a single node is not available for short period then problem caused is low. But if many nodes are not available for long period then it surely causes problems.

### 5) *Confidentiality*

The data travelled needs to be confidential. Once authentication is provided confidentiality is not an issue and even if attacker gets some data it is not able to authenticate to network.

## III. RELATED WORK

The most important security services required are confidentiality and authentication. There is relatively little work in the area of securing sensor networks. Like their mobile ad-hoc counterparts sensor networks lack a fixed infrastructure and the topology is dynamically deployed. [5] In the context of WSNs, security means to protect sensor data against unauthorized access and modification and to ensure the availability of network communication and services in spite of malicious activities. If collected data is private and sensitive such as user location information, then privacy issues are also of concern.

The classical means to ensure integrity and confidentiality of data is to use cryptographic algorithms. In all modern crypto primitives, the security more or less depends on the security of the cryptographic keys hence the distribution and management of keys has a vital importance. In Eschmauer and Gligor's[6] scheme the keys are drawn randomly from key pool. A code based key management system was proposed by Al-Shurman and Yoo [7]. where a matrix along with a vector is used for generating codeword.

Camtepe and Yener [8] proposed a deterministic key pre-distribution scheme using combinatorial designs. [9] shows a survey of different pre key-distribution schemes for Distributed Sensor Networks.

Ruj and Roy[10] proposed a scheme where Reed Solomon code is used for key pre-distribution and each node is given a unique polynomial. Key Pre-distribution Schemes in Dis-tributed Wireless Sensor Network using Combinatorial De-signs were revisited by Pattanayak and Majhi[11]. Sarkar , Saha and Chowdhury[12] proposed a scheme where communication and connectivity model is introduced. Where if two nodes want to communicate with each other then it has to match both of the connectivity key and communication key. As discussed in paper[13] the connectivity matrix of the network is considered.

#### IV. EXISTING SYSTEMS

The most of the existing security systems are based on different requirements of specific networks. While studying security solutions one may not find a standard methodology that will suit to most of the wireless sensor networks. On the basis of various categories of networks here is the short background of available security schemes defined for wireless sensor networks.[14]

##### A. Public key-based user authentication scheme [15]

It is assumed that public key operation is feasible for even a tiny sensor node. All of the public key-based schemes utilize a certificate which is generated by base station and used for user authentication. But, public key operation is slower and consume much energy than symmetric key(private key) operation. Thus, if an attacker launches DOS attack, the attacker can easily exhaust the limited energy of sensor node.

##### B. Symmetric key-based user authentication scheme[16]

A key distribution scheme for dynamic conferences is a method by which initially an (off-line) trusted server distributes private individual pieces of information to a set of users. Later, each member of any group of users of a given size (a dynamic conference) can compute a common secure group key. In this setting, any group of the users can compute a common key by each user computing using only his private initial piece of information. Keys are secure against coalitions of up to  $k$  users, that is, even if  $k$  users pool together their pieces they cannot compute anything about a key of conference comprised of other users.

##### C. A lightweight user authentication scheme [17]

It provides mutual authentication and session-key agreement. The scheme is executed on both sides; the WSN's coordinator side playing the role of the server, and the user's device side acting as a client. It is assume that there is an

administrator, which is responsible for loading necessary secret keys in the WSN and for registration of users. First, the administrator chooses a secret key  $x$  and then loads the system server and the coordinator with this secret key  $x$ . The system server uses this secret key for registration of users. The coordinator uses this secret key in order to verify the authenticity of users.

##### D. An Efficient Scheme for User Authentication [18]

In this paper, a distributed user authentication scheme suitable for sensor networks based on self certified keys cryptosystem (SCK) is proposed. First of all, SCK is modified to use the Elliptic Curve Cryptography (ECC) to establish pair-wise keys in sensor networks, because ECC is said to be feasible for WSN even without special hardware support. But this method is vulnerable to node capture attacks and it also requires synchronization between nodes.

##### E. Secured Network Encryption Protocol (SNEP)

The secured network encryption protocol (SNEP) has two entities base station and master key for generation of keys. Each node shares a pair of key with base station and other keys are obtained from master key. It is very useful protocol which guarantees confidentiality and integrity. The only drawback is that it does not handle node capture and Denial of service attacks effectively.

##### F. Localized Encryption and authentication protocol(LEAP)

LEAP provides different types of data switching scheme for communication among nodes that have different security requirement. It supports four types of node keys of private key, key pair between nodes, cluster key and group key [19]. The advantages of LEAP scheme is supporting data origin authentication, data processing inside the network and passively join of nodes. The one-way key chain of the above four different types of key sharing methods does not need time synchronization. However, the localize encryption and authentication protocol of the scheme is only suitable for general nodes that have not too high requirements on security or lower nodes. For the nodes that have high security requirements or very important gateway and main nodes, the security of the scheme is not enough and cannot completely prevent the Denial of Service attacks.

##### G. Fast Authenticated Key Establishment protocols

The paper "Fast Authenticated Key Establishment Protocols for Self-Organizing Sensor Networks" was written by Qiang Huang et. al at Princeton University and Mitsubishi Electric Research Laboratories to create an "efficient authenticated key establishment protocols between a sensor and a security manager in a self organizing network"[20]. In this project the researchers used elliptic curve cryptography (ECC) to provide encryption for the sensor nodes. ECC was chosen because only small key lengths are needed in order to

get a reasonable amount of security. To authenticate keys, certificates are used to find out if the public key is in fact a trusted sensor.

Huang et al. [20] proposed two efficient key establishment protocols for wireless sensor networks where a sensor node and a security manager can achieve key exchange and fast mutual authentication by using ECC cryptosystems. However these protocols require the transmission of public-key certificates which increase the communication overhead. Wood and Stankovic provide a comprehensive survey of attacks against wireless sensor networks and describe strategies that have been used to reduce their impact. The analysis classifies attacks following the OSI reference model for network protocol design.

The encryption-decryption techniques devised for the traditional wired networks are not feasible to be applied to wireless networks, in particular wireless sensor networks. The tiny sensors of WSNs suffer from the lack of processing, memory and battery power. Applying any of encryption technique requires transmission of extra bits, hence extra processing, and memory and battery power. Applying the security mechanisms such as encryption could also increase delay, jitter and packet loss in wireless sensor networks.

## V. PROPOSED METHODOLOGY

The proposed work addresses verification of nodes of the wireless sensor network ensuring that the nodes of network are all true nodes. The verification includes challenge response communication where care is taken that the secret of the node is not opened. Thus attacker will not get secret information. The project work includes the model of wireless sensor network. The clustering approach of network is used here. The network is divided into base station, cluster heads and member nodes. Base station is powerful and has information of total network. The network is divided into clusters. Each cluster has limited nodes. Each cluster has one cluster head. The verification (authentication) of any sensor node of particular cluster is done by respective cluster head. Verification of cluster head will be done by Base station. Each node knows its immediate neighbors. If certain attack occurs on the network, base station will alert to network especially to particular cluster head. Cluster head then carries verification for that node and don't allow it to enter the network. Thus network will be secured.

The nodes of wireless sensor network are subjected to various physical attacks. The physical attacks like node capture, cloning attack, replay attack, compromising nodes and man-in-middle attacks are very harmful in this case. It is easy for attacker to capture the node and copy the cryptographic information like keys. Attacker can also produce an identical node of existing node (cloning) and inject that node into network. Such nodes are inserted in network.

The proposed work addresses such types of attacks. The proposed scheme is allowing the identification and verification without revealing any secret information during the conversation between the nodes. In verification the main task of proving node is to convince verifier of some secret through series of communication. The communication may have questions and challenges [13]. The only true node can correctly prove the identity. Here ID of node can also be considered. This scheme is very much secured as the attacker node will not get any of the secret information out of intercepted messages. The clustering technique like following can be used.

### A. Objective

The objective of this project work is to design a secured authentication scheme for node authentication in Wireless Sensor Network. Every node whether member node or foreign node will have to pass security challenges imposed by algorithm to have participation in network. In verification process the secret key of node is not revealed making network more secure. In this way all the nodes which are in network will be true nodes and communication through them will be surely secured.

### B. Assumptions

- Cluster based network approach is used. Nodes are divided as Base station, Cluster head and member nodes.
- Every cluster head knows its members.
- Base station has all information about network.
- There is no direct communication between member nodes.
- The level of authentication responsibility is like member nodes are verified by respective cluster heads and cluster head is verified by base station.

The proposed project work involves

- Network Model for explanation.
- Finding Fingerprint (Secret) for nodes based on Code word and Connectivity matrix.
- Implementation of Algorithm for existing nodes.
- Checking and avoiding the system for attacks.

### C. Algorithm

The algorithm includes verification process for a sensor node. The secret fingerprint's for each node in the network is obtained based on code word matrix and connectivity matrix. Base station maintains N as public key which is prime number.

- a) A node (Prover) tries to verify at particular cluster. So verifier node will ask for secret of prover node to Base Station.

- b) Base station will not directly transfer secret, it will instead generates  $v=s^2 \text{ mod } N$  and gives to verifier.
- c) Prover will select any random number 'r' and send ( $p= r^2 \text{ mod } N$ ) to verifier.
- d) Verifier will pass now a challenge  $e=0$  or  $e=1$  and will ask prover the value of  
 $(y = r s^e \text{ mod } N)$ .
- e) If  $e=1$  verifier got  $y=r s \text{ mod } N$ . Verifier don't know s. So calculates

$$y^2 \text{ mod } N = ((r s \text{ mod } N)^2 \text{ mod } N)$$

$$y^2 = (r^2 \text{ mod } N) * (s^2 \text{ mod } N)$$

$$y^2 = p * v.$$

Verifier got both p and v from steps b and c . So it compares with  $y^2$  and confirms authenticity of prover node.

D. Flowchart

Based on authentication steps we can have flowchart like this.

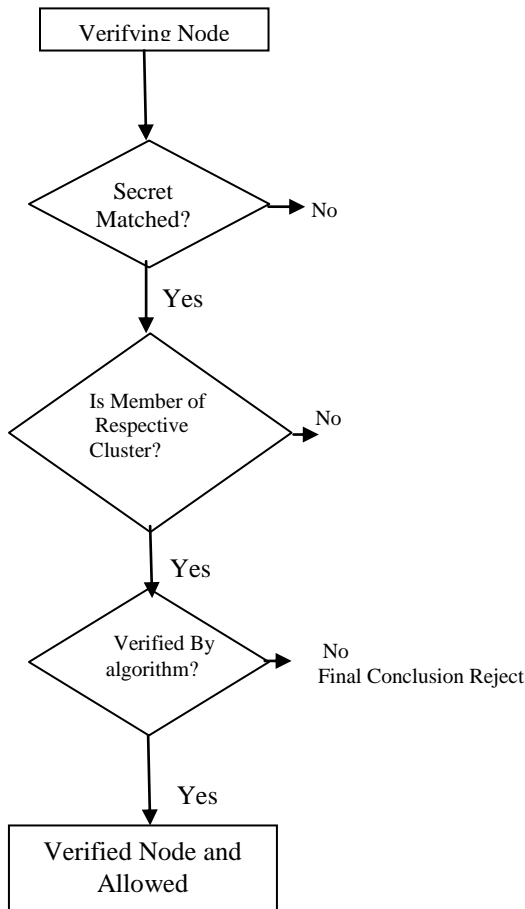


Figure 1. Flowchart for authentication scheme

VI. IMPLEMENTATION

The implementation of the proposed methodology is divided into following parts

- Network topology is obtained as network for explanation.
- Finding unique fingerprint for each node.
- Verifying existing nodes of the model
- Detecting the various attacks and securing the network from attacker nodes.

The implementation of this project is done in Matlab software.

A. Network topology

Based upon number of nodes and number of clusters heads a network model is formed and further verification will be carried out on this network itself. For Ex we consider network model as,

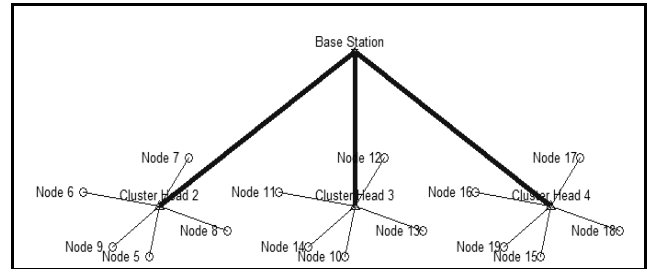


Figure 2. Existing model for explanation.

B. Unique fingerprint for each node

Depending upon number of nodes in the wireless sensor network, a Node code word is designed for each node in the network. Also, based upon the network architecture, a connectivity matrix is obtained. With the help of code word and connectivity matrix secret for each node can be obtained. The fingerprint is the binary unique combination. This is called as fingerprint which is surely unique for each node and it always changes immediately in each verification process. So, much of security is assured. Connectivity Matrix

A connectivity matrix is obtained for the existing model. The connectivity matrix describes the connectivity of particular node with other member nodes and preserves the social characteristics of the network.

1) Superimposed Node codeword

The node codeword used to generate fingerprint using the connectivity matrix. For each sensor node, a node code word is formed of particular strength. The strength of the



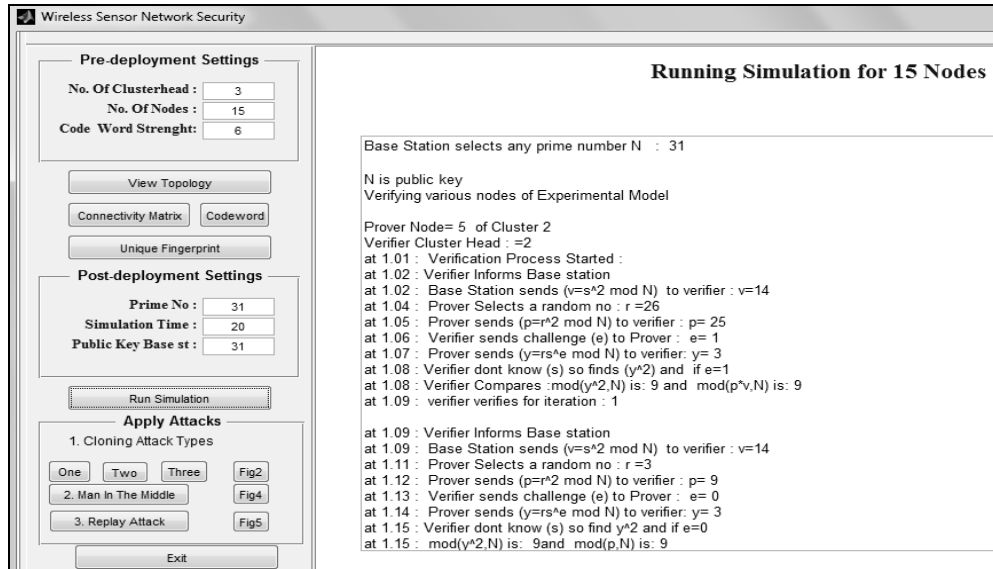


Figure 5. Verification of various nodes of network.

Thus the node is verified and confirmed as true node.

having secret key of the node whose identity is shown by attacker node.

#### D. Detecting attacks and securing system

The proposed work verifies the system for various attacks like

##### 1) Cloning attack

The attacker node may try to capture some nodes of network and make clone nodes having some secret key and identity number of original node. Then attacker will try to authenticate that cloned node. We have considered here three two types of cloning attack.

###### a) Cloning of sensor nodes

Cloning of member sensor nodes is done and they try to verify. We considered here two subtypes based upon to which cluster head attacker node requests for verification.

- *Type 1 A. Cloning of node of one cluster is done and placed in another cluster.*

In this case as the cloned node shows identity of another cluster it will not be allowed. Base station will alert the respective cluster and verified by cluster head for confirming that it is attacker node. As the attacker node is selecting any random key it will not be able to pass all the challenges given by verifier node.

- *Type 1 B Cloning of node of some cluster is done and cloned node is placed in same cluster.*

Here the node will have to pass the challenges of protocol passed by cluster head. Also attacker node is not

##### b) Type 2 Cloning of Cluster head

Cloning of Cluster head is done and attempts to authenticate. Here cluster head is cloned and then cloned cluster head is placed. Base station is the verifier here. Now the attacker cluster head will select any random key and attempts to authenticate. But the fake secret key will not allow the attacker node to have verified.

##### c) Man-in-the-Middle attack

The attacker node tries to make independent connection and attempts to verify with possible information it has got through intercepting the network. But the attacker node will not have any guess of the fingerprint secret, so it will not be verified.

##### d) Replay attack

Here, attacker node makes independent connection with network and tries to pass the previous communication responses. Random selection of keys makes it impossible for attacker node to get authenticated.

In all the above attack even if attacker tries to authenticate using different keys(secret fingerprints), it has to try surplus number of keys. Also rekeying mechanism changes the keys of the network for every verification process. Because key size is not much more it will not add large overhead on the network. This makes attacker node nearly impossible to guess the secret fingerprints of the nodes.



E. Implementation of Cloning attack scenario

At last stage various attacks with their prevention are implemented. The project addresses three main types of attacks cloning, man-in-the middle and replay attack on wireless sensor network. The methodology for attack implementation includes

1. Base station finds if fingerprint of node matches with true data. Obviously fingerprint secret of attacker node will not match.
2. Base station also checks whether node belongs to the respective cluster if particular number of node is mentioned.
3. It then verifies node for minimum five times and makes it not verified and thus will not have entry in network.

Various attacks are shown to be impossible on the network. This is due to unique fingerprint of the nodes that attacker can't get.

Example of attack implementation:

- Clones of nodes are made and placed in network.
- Type : Node of one cluster is cloned and placed in another cluster

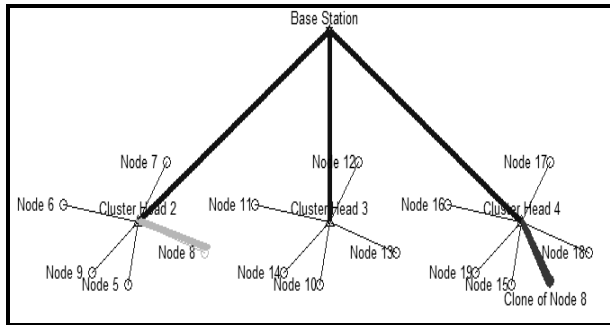


Figure 6. Cloning attack scenario

```

Public Key Selected by Base Station is : 31
CLONING ATTACK
Type-1 A: For Nodes : Placed in other Cluster

PART I: Attack Scenario: Cloning of Node 8
Cloned of Node8 is placed in Different Cluster:4
Prover Node=8 of Cluster:2
Verifier is Cluster Head:4

PART II ALERT!
Message From Base Station: Attack in Cluster:4
The node 8 is not member of Cluster: 4

at 0.01 : Verification Process Started :
The FingerPrint of original node is : 1001001110100000000
The FingerPrint of attacker node is : 0001000100100001000
The FingerPrint mismatch!

PART III Now overcoming Attack
Verifying for iteration1
at 0.02 : Base Station sends v to verifier : v=18
at 0.02 : Prover sends p to verifier : 20
at 0.04 : Verifier sends challenge e to Prover : e=1
at 0.05 : Prover sends y to verifier : y=20
at 0.05 : Verifier not verifies for iteration :1
    
```

Figure 7. Verification for above cloning attack

Thus, Verification failed. Attacker Node not allowed.  
Network is SECURED.

VII. RESULT ANALYSIS AND DISCUSSION

Here is explained the result analysis of the proposed system. The proposed system is found to be reliable and more secure for the wireless sensor networks which are having resource constraints.

The attacker node will not have any confirm chances of finding fingerprint. If any attacker tries to find out fingerprint it will be having one of the chances from  $2^N$ . So the probability reduced to  $(1/2^N)$ . If even though attacker finds the fingerprint, that fingerprint might have been changed due to the technique re-keying mechanism. So there are very less number of chances to have secret fingerprint of node and have attack through them.

- Re-Keying is secure technique.
- Fingerprint guessing is nearly impossible.
- 

Attacker is having one of the chances from  $2^N$ . So the probability reduced to  $(1/2^N)$ .

TABLE I. PROBABILITY FOR FINDING SECRET

SR. NO.	No. of Nodes	Probability to find secret
1.	13	0.000122
2.	19	0.000001907
3.	28	0.000000003725
4.	31	0.000000000465
5.	38	0.0000000000036

The scheme supports scalability in the respect of number of nodes. This model is scalable because many numbers of nodes can be entered and scheme can be implemented on them.

Y axis- Number of nodes

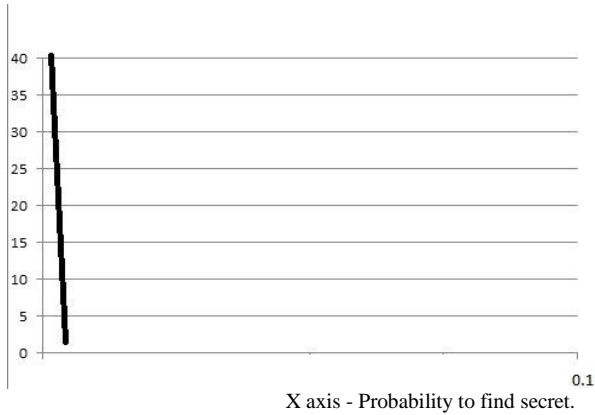


Figure 8. Graph for probability for finding secret

## VIII. FUTURE SCOPE

The various attack avoidance makes system more secure. As we have considered the neighbourhood of node the future scope of this system will be to make system more powerful with neighbourhood information. Also it will be more fantastic if the whole system is implemented on real hardware. The node codeword preserves the neighbourhood information and further the social characteristics of particular node may be analysed and used for more security by neighbour nodes. In any type of system the more emphasis should be given to the security of system than the applicability. Thus this security of wireless sensor networks may achieve greater heights if many of the passive and active attacks scenarios are implemented.

## CONCLUSION

Authentication is one of the best security solutions which protects whole sensor network. The security algorithm used will no longer transmit the knowledge (secret) and thus secures whole network. The main aim of this work is to design a system where each node will be authenticated before accessing or participating in network. The network is available to nodes only if they are able to satisfy all the condition of network algorithm. This technique requires less number of computations and not having any complex operations so this is useful in resource constraints networks. The proposed security using authentication without opening the secret information is highly secured and will not be broken. Thus much of the security is obtained using this proposed scheme.

## REFERENCES

- [1] O. Chipara, C.Lu, and J.A. Stankovic, "Dynamic Conflict free Query Scheduling for Wireless Sensor Networks", IEEE International Conference on Network Protocols (ICNP'06), November 2006.
- [2] Canming Jiang, Bao Li and Haixia Xu "An Efficient Scheme for User Authentication in Wireless Sensor Networks", 21st International Conference

- on Advanced Information Networking and Applications Workshops (AINAW'07) 2007 IEEE.
- [3] Wood, A. D. and Stankovic, J. A., "Denial of service in sensor networks," IEEE Computer, vol. 35, pp. 54-62, 2002.
- [4] Chris Karlof and David Wagner, "Secure Routing in Wireless Sensor Networks :Attacks and Countermeasures," Proceedings of the First IEEE International Workshop on Sensor Network Protocols and Applications, USA., (2003).
- [5] Jeffery Undercoffer, Sasikanth Avancha, Anupam Joshi and John Pinkston, "Security for Sensor Networks", Academic Report, University of Maryland Baltimore County Baltimore.
- [6] L. Eschenauer, V. D. Gligor, A key-management scheme for distributed sensor networks In: Atluri, V. (ed.) ACM Conference on Computer and Communications Security, pp. 41-47. ACM, New York, 2002.
- [7] M. Al-Shurman and S. M. Yoo, Key pre-distribution using mds codes in mobile ad hoc networks, In: ITNG, pp. 566-567. IEEE Computer Society Press, Los Alamitos, 2006.
- [8] Seyit Ahmet Camtepe and Bulent Yener. Combinatorial design of key distribution mechanisms for wireless sensor networks. In Pierangela Samarati, Peter Y. A. Ryan, Dieter Gollmann, and Refik Molva, editors, ESORICS, volume 3193 of Lecture Notes in Computer Science, Springer, 2004.
- [9] S. A. Camtepe, B. Yener, Key distribution mechanisms for wireless sensor networks:A survey 2005. Technical Report, TR-05-07 Rensselaer Polytechnic Institute, Computer Science Department, March 2005.
- [10] S. Ruj, B. Roy, Key Predistribution Schemes Using Codes in Wireless Sensor Networks Inscrypt 2008, LNCS 5487, pp. 275- 288, 2009. Springer-Verlag Berlin Heidelberg, 2009.
- [11] Anupam Pattanayak, B. Majhi Key Predistribution Schemes in Distributed Wireless Sensor Network using Combinatorial Designs Revisited National conference on modern trends of Operating Systems MTOS -2009 Bhubanaswaer,2009.
- [12] Pinaki Sarkar, Amrita Saha and Morshed Udan Chowdhury, Secure Connectivity model in Wireless Sensor Networks (WSN) using 1st order Reed-Muller codes, International Association for Cryptologic Research , 2010.
- [13] Siba Ugata, Alefiah Mubeen and Samrat Sabat " Wireless Sensor Network security using zero knowledge Protocol. IEEE communications ICC 2011 Proceedings.
- [14] Shakera Shaikh & Veena Gulhane, "User Authentication Techniques for Wireless Sensor Networks : A Survey", International Journal of Smart Sensors and Ad Hoc Networks (IJSSAN) ISSN No. 2248-9738 Volume-1, Issue-4, 2012.
- [15] Ismail Butun and Ravi Sankar,2011." Advanced Two Tier User Authentication Scheme for Heterogeneous Wireless Sensor Networks". 2nd IEEE CCNC Research Student Workshop.
- [16] X.H. Le, S. Lee, and Y.K. Lee. "Two-Tier User Authentication Scheme for Heterogeneous Sensor Networks." the 5th IEEE International Conference on Distributed Computing in Sensor Systems, (DCOSS '09), Marina Del Rey, California, USA, June 8-10, 2009.
- [17] Omar Cheikhrouhou1,2, Anis Koubaa3,4, Manel Boujelben1, Mohamed Abid1,2010." A Lightweight User Authentication Scheme for Wireless Sensor Networks" International Conference on Sensor Networks, Ubiquitous, and Trustworthy Computing.
- [18] C. Jiang, B. Li, and H. Xu, "An efficient scheme for user authentication in wireless sensor networks" in 21st International Conference on Advanced Information Networking and Applications Workshops (AINAW'07), 2007.
- [19] L. Lazos and R. Poovendran. "Secure Broadcast in Energy-aware Wireless Sensor Networks". IEEE International Symposium on Advances in Wireless Communications (ISWC'02), 2002.
- [20] Huang, Q., Cukier, J., Kobayashi, H., Liu, B., Zhang, J. Fast authenticated key establishment protocols for self-organizing sensor networks. In: ACM WSNA 03, 2003.